

Early Childhood/Early Childhood Special Education 20-21 SY

Parent Information Session

August 26, 2020



ROBBINSDALE
Area Schools

Individual focus. Infinite potential.



Introduction

- Welcome!
- Facilitators: Emilie Levinson (ECSE)
Anh Tran (ECFE/Preschool)
- Purpose:
Provide updated information regarding EC/ECSE Smart Start plans.
Address FAQs
Time for Q and A

Individual Focus. Infinite Potential.

Three diagonal lines in blue, green, and orange colors, starting from the bottom left and extending towards the top right, positioned behind the text 'Individual Focus. Infinite Potential.'

Early Childhood



Community
Connection
Care
Nurturing Support

Individual Focus. Infinite Potential.

Our Values

- Health and safety of students, staff and families
- Focus on social-emotional needs
- Equity, fairness and inclusion
- Meeting the diverse needs of students and staff
- Continuity of instruction based on State standards
- [Unified District Vision](#) and [Equity policy](#) as guiding documents

Individual Focus. Infinite Potential.

Three diagonal lines in blue, green, and orange colors, extending from the bottom left towards the top right, positioned behind the text 'Individual Focus. Infinite Potential.'

MDE Decision Making Goals for 20-21 SY Planning

1. Prioritizing the safety of students and staff.
2. Prioritize in-person learning, especially for younger learners and those with the most need (*e.g., vulnerable populations*).
3. Recognize differences in potential spread among different ages.
4. Support planning, while permitting flexibility for districts.
5. Take into account disease prevalence at a local level.

Individual Focus. Infinite Potential.



Safe Learning Models



Safe learning models:



Distance learning



Hybrid learning



In-person learning

* Regardless of learning model, all public schools must offer an equitable distance learning option to all families.

August 10 - School Board passed a resolution adopting Distance Learning PLUS (*Personal Learning with Unified Supports*)

Distance Learning	<i>Temporary</i> shift of instructional delivery and support through a virtual platform due to high rates of COVID transmission.
Hybrid Learning	Learning is scheduled to be delivered through a virtual platform and in-person.
In-Person Learning	Traditional on-site learning schedule and routines.

Online Learning*

Parents may opt for instruction and student support to be provided through a virtual platform for the school year.

Parent input

- Consistency across grade levels and schools
- One platform and a system
- Technology concerns
- Evidence of their child's learning to better understand their child's progress
- Face to face time with teachers
- Consistency in schedules

Learning Platforms

Seesaw - Student driven digital portfolios and simple parent communication



Google Meet - Real-time meetings



Google Meet

Virtual Classrooms - an online learning environment that allows teachers and students to interact.



Instructional Delivery

- Children will have an opportunity to join a regularly scheduled live whole class meeting for 15-20 minutes via **Google Meet**. This time may be extended as students become more accustomed to and gain stamina with meeting online.
 - Meetings will be recorded so students and families can access at their convenience to review afterwards. Families may choose to leave cameras off.
 - Parents in ECFE may be utilizing Zoom. Parent meetings will not be recorded but content and resources will be shared.
- A limited number of iPads and Hotspots will be made available to families, with priority going to families with no access to any other device.

Individual Focus. Infinite Potential.



Instructional Delivery

- Additional **optional** opportunities for students (and parents) to connect with staff during connection times through Google Meet.
 - Relationship building
 - Office Hours
- Learning activities connected to live instruction and supported by videos and other resources for literacy, math, social emotional learning, movement, and art, will be shared via Seesaw through a virtual classroom. These activities may be completed within the timeframe of the regularly scheduled class or at a more convenient time for families.



Individual Focus. Infinite Potential.

Seesaw

DC Demo Class
Teacher - 3 Classes

Journal

Using Seesaw For Home Learning?

Get Home Learning Codes

Me
Melissa



My New Ending



they become fish
and swim places

Mar 25, 2020

Like Comment

+

Add

SD

Seesaw Demo

Teacher



Journal



Activities



Inbox



Skills



Blog

SD

Class Journal
6 items



Sample Student
0 items



Aly
2 items



Ben
0 items



Carl
2 items

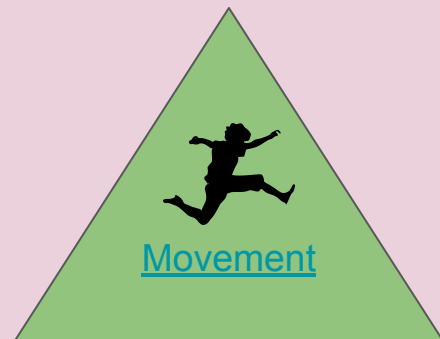
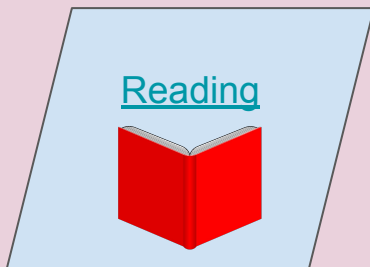


Colleen
1 item



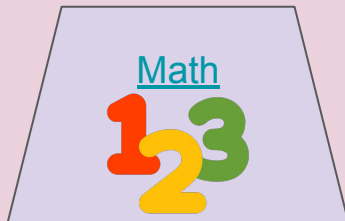
Karim

Welcome to Preschool!



This week's theme is
Pets! We will:

- Listen and talk about pets
- Practice counting
- Watch and ask questions about animals



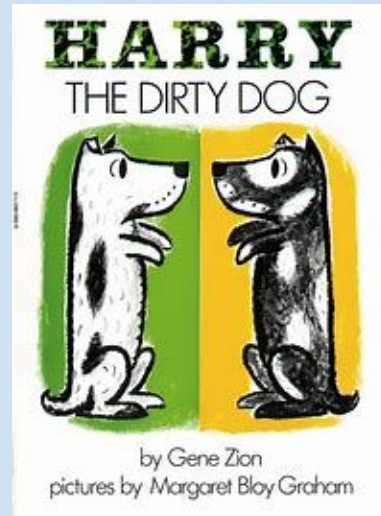
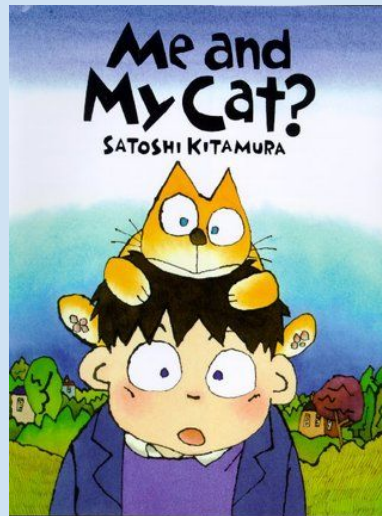
Sample Virtual Classroom

Reading



Click on a book to listen to the story!

1. Draw a picture of a pet you would like to have. Label your picture.
2. Think about what pets need to live and be happy. Make a list of things that pets need.



Sample Virtual Classroom

Schedules

ECFE

5 day Preschool

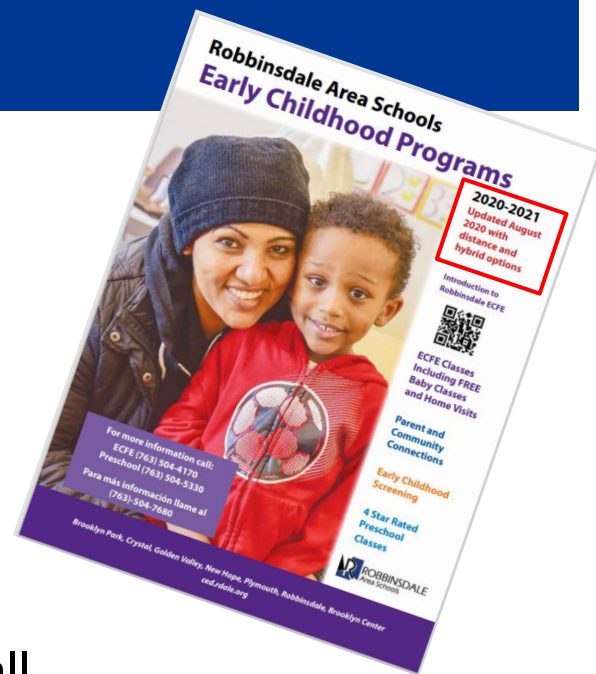
Center-based ECSE

2-5 day tuition based preschool



ECFE

- Start in Distance Learning
- Offer families [courses](#) designed as Distance (online) or Hybrid
- Move to offering hybrid model as soon as possible
 - Adhere to safety protocols
 - Utilize cohorts to keep student groups small
 - Utilize outdoor spaces as much as possible
- Due to limitations on onsite visitors, sibling care will not be available



ECFE Sample Schedule

TIME	SCHEDULE	MODE	CONTENT
9:00 - 9:05	Arrival	Meets/Zoom	Greeting/Welcome
9:05-9:20	Circle Time	Meets /Zoom	<p>The following elements may be included as appropriate for group/age:</p> <ul style="list-style-type: none"> • Greeting chant/song • Sharing prompt • Activity • Additional song(s) • Prep for parent-child interaction or observation activity <p>Children's activities will be geared towards one or more Early Childhood Indicators of Progress.</p>
9:20-9:25	P-Child Interaction	Meets/Zoom	Parenting adult and child follow a guided interaction/observation activity that only requires items/supplies most families will have in home. <i>Specialized supplies may be made available for pick-up by families periodically.</i>
9:25-9:30	Story	Meets/Zoom	<ul style="list-style-type: none"> • Read story with families. • For toddler/mixed-age classes, conclude child-focused time by offering a suggestion for an activity a child can do independently during the beginning of parent discussion.
9:30-10:25	Parenting Discussion	Meets/Zoom	<ul style="list-style-type: none"> • Interaction/observation activity is reviewed and processed. • Progress in practicing new skills discussed in previous week(s) is reviewed. • Research-based parenting information, aligning with one or more indicators from the Parent Education Core Curriculum.
10:25-10:30	Summary/Closure	Meets/Zoom	<ul style="list-style-type: none"> • Summarize session. • Home Application: Encourage parents to practice new skills, new ways of thinking, new applications, or new observations. Suggest activities for follow-through or enrichment at home linked to the parent-child relationship.

Preschool Distance Learning Daily Sample Schedule

Synchronous / Asynchronous

TIME	SCHEDULE	MODE	CONTENT
9:00 - 9:10	Virtual Arrival	Virtual Classroom	Greeting Message, Check-In/Attendance, Link to Morning Meeting
9:10 - 9:30	Morning Meeting	Google Meets	Greeting; Song Sharing; Question of the Day Activity; Teacher Preview: Teacher explains learning center options and expectations around the learning centers as well as who is engaged in small group work on the particular day
9:30 - 10:00	Small Group	Google Meets	Family Connections: relationship building & logistics Student Instruction: math, literacy, social/emotional
9:30 - 11:00	Learning Centers	Virtual Classroom (family choice)	<i>Learning Centers that provide students with an opportunity to choose from prerecorded Math, Literacy, Social Emotional, Science, and Movement based activities provided by the teacher (in alignment with the Curriculum Map for 5 Day programs)</i>
11:00 - 11:30 Optional	Student Connection	Google Meets	Optional opportunity for any student to connect virtually with EA & classmates, teacher can support if no office appointments scheduled.
11:00 - 11:30 Optional	Office Hours	Google Meets <i>MyConference Time</i>	Optional opportunity for families/parents to connect virtually with teacher during office hours.

Google Meets for Circle Time and Small Group will be recorded and made available for families for review. Students may turn cameras off.

5-Day Preschool Schedule for Hybrid Learning

- Within each 5-Day preschool section (at elementary sites and New Hope Learning Center), there will be two groups of students.
- Students enrolled in 5 Day Preschool who choose the Distance Learning option would not be scheduled onsite.

	MONDAY	TUESDAY	WEDNESDAY	THURSDAY	FRIDAY
GROUP A (AM & PM)					
GROUP B (AM & PM)					

In-Person Learning

Distance Learning

Wednesdays are flexible

Families and Students:

- Additional support through small groups or individual meetings
- Materials scheduled pick up & drop off
- Parent communication
- Asynchronous learning activities

Staff:

- Professional Learning Community (AM)
- Professional learning (e.g. from 2:35 - 3:35 p.m.)
- Collaborative planning time
- Student interventions
- Assessments

2-4 Day Preschool Schedule for Hybrid Learning

2-4 Day Preschools will have regularly scheduled time onsite depending on enrollment and number of days.

Preschool Class	In Person	Distance Learning
2 day preschool at New Hope Learning Center	1 day per week	1 day per week
3 day preschool at New Hope Learning Center	1 day per week	2 days per week
4 day preschool at New Hope Learning Center	1 day per week	3 days per week

EXAMPLE ECSE Center Based Daily Student Schedule

Specific times
not listed due to
AM & PM
sessions

Schedule	Distance Learning	Hybrid
Welcome Activity Time: 5 min	<ul style="list-style-type: none"> Recorded activity Social emotional learning 	<ul style="list-style-type: none"> Working on Independent Skills Social emotional learning Follow welcome routine
Circle Time Time: 15-20 min *3 Circle Times during In person learning	<ul style="list-style-type: none"> Live instruction Recorded for access later Includes math, literacy and social emotional learning 	<ul style="list-style-type: none"> Letters/Reading /Positional concepts/Weather Counting/Number concepts/Size Music and movement
Small Group Activities OR Supported Independent Practice Time: 15-20 min	<ul style="list-style-type: none"> Live instruction Recorded support videos Family/student enhancement activities Includes math, literacy and social emotional learning 	<ul style="list-style-type: none"> Engage in play Participate in small group work with support Includes math, literacy and social emotional learning
Read Aloud Time: 10 min	<ul style="list-style-type: none"> Live instruction Recorded for access later Family/student enhancement activity Includes math, literacy and social emotional learning 	<ul style="list-style-type: none"> Embedded into Circle Time
Specialized Instruction: Time: 20-30	<ul style="list-style-type: none"> 1:1 live instruction from service providers for specific Individualized Education Plan goal work Progress monitoring Family/Student DL check-ins 	<ul style="list-style-type: none"> 1:1 live instruction from service providers for specific Individualized Education Plan goal work Progress monitoring Embedded throughout the daily routine
Closing Activity/Departure Time: 5 min	<ul style="list-style-type: none"> Recorded activity Social emotional learning 	<ul style="list-style-type: none"> Working on Independent Skills Social emotional learning Follow welcome routine

ECSE Schedule for Hybrid Plan

ECSE Center Based Weekly Schedule

****ECSE families that choose to enroll in 281 Distance Learning School will not be scheduled onsite.***

	MONDAY	TUESDAY	WEDNESDAY	THURSDAY	FRIDAY
HYBRID AM & PM Group A			1:1 sessions with families & students Related services		
HYBRID AM & PM Group B			Evaluations Pre-recorded instruction		
In Person Learning	Distance Learning		No class day		

ECSE Inclusion Services

Distance Learning	Hybrid
<ul style="list-style-type: none"> • 1:1 Live instruction to address IEP goals and objectives via Google Meet • Seesaw activities in conjunction with cooperating teacher • Modified activities as needed to support engagement with distance learning 	<ul style="list-style-type: none"> • In person IEP services embedded into classroom routine • 1:1 Live instruction to address IEP goals and objectives via Google Meet • Seesaw activities in conjunction with cooperating teacher • Modified activities as needed

Early Intervention B-3 Services

Distance Learning	Hybrid
<ul style="list-style-type: none"> • Students and families will receive virtual coaching sessions and services based on their Individualized Family Service Plan. • Students and families may be invited to New Hope Learning Center to complete face to face components of an evaluation as needed. 	<ul style="list-style-type: none"> • Students and families will receive coaching sessions and services based on their Individualized Family Service Plan either virtually or one to one in outdoor settings following Minnesota Department of Health (MDH) Guidelines. • Students and families may be invited to New Hope Learning Center to complete face to face components of an evaluation as needed and following Minnesota Department of Health (MDH) Guidelines.

Open House & Welcome Week

*Building community and getting to know your child
and family.*

Three diagonal lines in blue, green, and orange colors, extending from the bottom right towards the center of the slide.

Open House

Thursday, September 3, 5:00 - 7:00 PM (optional)

Pre recorded videos that contain the following information:

- Introduce teacher(s)
 - Start of the school year and accessing instruction
 - What's next (Welcome Week)
-
- Live google meet options for families to connect with their teacher(s)
 - Families will receive individual student information as well as Open House and Welcome Week information

NHLC Welcome Week

Families will receive information to schedule individual Google Meet conferences during the week of **September 8 - 11**.

- Opportunity for parents, students, and teachers to make connections and to review information and expectations for a successful experience.
- Parents of students with IEPs will meet 1:1 with special education teachers to discuss their child's Continuous Learning Plan
- Please complete the google survey that will be sent to you prior to your conference to help us get to know and better support your child.

Safety Protocols

For Onsite Learning when Hybrid Model (onsite learning) is Permitted



Health and Safety Measures for Onsite Activity

- Families and staff may not attend if ill. An isolation room is set aside for anyone who becomes ill while at school. We will follow [MDH protocols](#) with the help of the site COVID Coordinator, should there be a positive test for COVID.
- All adults will be expected to wear a mask while onsite. Exemptions are allowed for those with a medical condition, mental health condition, or disability that makes it unreasonable for the individual to maintain a face covering.
- Children between ages 2-5 are asked to bring a mask and will be encouraged and supported in learning how to use them as developmentally appropriate.
- We do not expect young children to follow social distancing practices at all times. However, we will teach and encourage children to “give one another space” and socially distance to the extent possible.

Individual Focus. Infinite Potential.



Health and Safety Measures for Onsite Activity


- Good health hygiene will be practiced and taught. Children will wash hands frequently during the day--prior to entering the classroom, before and after transitions to different parts of the building such as the playground or motor room, etc.
- Groups will be cohorted into pods of no more than 9 to minimize contact between pods, utilizing different entrances, scheduled room use and facilities for handwashing and sanitizing procedures.
- Classroom materials will be minimized and individualized with [protocols](#) for handling of materials and high-touch surfaces. All staff will be trained on COVID awareness and the proper use of cleaning materials.
- Outdoor spaces will be utilized as much as possible.

Individual Focus. Infinite Potential.



Time for Questions

Other Resources

- [District Website - Smart Start](#)
 - [FAQ](#)
 - [Early Childhood](#)
 - [Early Childhood Special Education](#)
- 

Summary and Next Steps

Monday, August 31	Safe learning plan will be posted to the district website.
Thursday, September 3	Virtual Open House, 5:00 - 7:00
September 8 - 11	Welcome Week Meetings
Week of September 14	Most classes will begin

If you have any additional questions, please contact:

EC_Preschool@rdale.org or 763-504-5330

ECFE_281@rdale.org or 763-504-4170

- Anh_Tran@rdale.org (EC/ECFE)
- Emilie_Levinson@rdale.org (ECSE)
- Elementary school principal at Firstname_Lastname@rdale.org

Thank you for your ongoing partnership in the education of your child(ren)!

Individual Focus. Infinite Potential.



Excellence is Our Standard

At Robbinsdale Area Schools, we are dedicated to
Academic Excellence for *ALL* Students!

THANK YOU!



ROBBINSDALE
Area Schools
Individual focus. Infinite potential.